



# CHILL



# OUR STORY





# THIS IS US

Chilli Pro Scooter stands for absolute passion and 100% support for the stunt scooter sport. Founded in 2010, with the goal of developing a high-end stunt scooter line-up for all ages and skill levels, we now offer everything from kids' stunt scooters to professional models. According our motto «scooters for every skill level» we research, develop, test and design day in, day out in cooperation with our Chilli Pro and Flow riders to build the best stunt scooters for you. the best stunt scooters for you and our continuously growing community. To match our expanding audience, we've redefined our product range into clear chapters: **Base** (entry level), **Specialty** (specific styles like Pump Track), **Park, Street** and **CSG** (custom parts from our riders for those aiming higher).

# CHILLI RIDERS





# PUSHING LIMITS

At Chilli Pro Scooter, we believe that true progression begins where limits end. Our riders don't just compete – they inspire. From local freestyleparks to world stages, they embody what Chilli stands for: precision, creativity, and fearless energy. Chilli Pro Scooters continues to grow – in community, team riders, and brand awareness. At the European Championships in Norway 2025, Harvey Perkins and Neve Entwistle claimed Gold, showcasing world-class performance. Our riders not only shine at competitions but also break records –Tom Buxbaum, just 12 years old, set a world record with 20 Flairs! Our team is pushing boundaries daily, striving to become the best in the world. Every competition, every trick, every landing – it's a reflection of the dedication that drives our team. With passion forged in the park and performance built into every scooter, Chilli Pro Scooter continues to shape the future of freestyle riding worldwide.

**KEEP ON RIDING – TEAM CHILLI**

# CONTENT

<b>8</b>	<b>STUNT SCOOTER DICTIONARY</b>
<b>15</b>	<b>SCOOTER GUIDE</b>
<b>16</b>	<b>BASE</b>
<b>36</b>	<b>PARK</b>
<b>48</b>	<b>STREET</b>
<b>56</b>	<b>SPECIALITY</b>
<b>64</b>	<b>CSG</b>
<b>68</b>	<b>MERCH</b>
<b>70</b>	<b>PARTS</b>





# STUNT SCOOTER DICTIONARY







## STREET SCOOTER

Street scooters are generally **larger, heavier and have a wider deck**. They are particularly suitable for riders who are often on the road and **grind on ledges or rails**. The long, wide deck offers more stability and space for the feet and the rectangular shape allows easier 50-50's and other street tricks.

## PARK SCOOTER

Park scooters on the other hand have a **compact, light-weight deck** and a **shorter T-bar**. They are better suited for more complicated tricks in parks such as combinations of **whips and barspins or briflips**.

VS

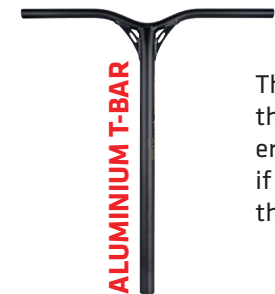




The chrome-molybdenum alloy is ideal for every rider level. This alloy is characterised by a very **high stability**.



For most riders, the steel bar is the best choice. It is very **robust, durable** and can even **withstand bad landings**.



The aluminium bar is very **light** and is therefore often used for children's scooters. Taller Riders should only use this T-bar if they have the necessary experience, as this bar can bend during a bad landing.



**Ultra-light** titanium bar with **maximum stability** for freestyle scooters. Offers perfect handling, high durability and optimal control for every trick. This bar can bend during a bad landing





## 100 MM vs 110 MM vs 120 MM WHEELS

Wheels with a diameter of 100 mm, 110 mm or 120 mm are usually used in stunt scooters. The **width is always 24 mm**, so that the wheels fit into all common forks. The **bigger** the wheels are, **the faster** they are, but this also affects the weight. Since we've noticed a different user behaviour, we also offer **Wheels up to 150 mm** within our Range, which are also slightly wider.

**Important:** The suitable wheel size depends on the fork and brake used, **not all wheels fit on all scooters**.



## ABEC 7 vs ABEC 9 BEARINGS

Ball bearings ensure that the wheels rotate smoothly. The running speed of ball bearings is given in ABEC. **The higher the number behind the unit, the higher the quality and faster the ball bearing.** For stunt scooters, a distinction is usually made between ABEC 7 and ABEC 9 ball bearings. Cheap stunt scooters often have only ABEC 5.

As a **premium brand**, Chilli uses **only ABEC 9 in all stunt scooters** to ensure optimal riding characteristics.



## CHILLI COMPRESSION SYSTEMS

Chilli Scooters are equipped with either an **SCS or HIC compression system**. Compression systems connect the bar to the fork and deck. Stunt scooters use special compression systems to **withstand the high loads**. In addition, compression systems **minimize bar wobble** and thus enable easier barspins and tailwhips.

Even if some riders prefer one or the other system, they both **serve the same purpose**. So in the end it is a matter of taste which compression system you choose.

## SCS

With the SCS Compression System (Standard Compression System) the **clamp** is **placed on a fork** and inside the clamp the screw is **tightened from above**.



## SPIDER HIC/ HIC

HIC systems (Hidden internal Compression) are almost standard on Chilli Scooters. A HIC shim is **placed on a HIC fork** and a screw is **screwed in from above**.

The only difference between the classic HIC and a Chilli Spider HIC is that the **shim looks like a spider**, hence its name.







CHILLI 



# SCOOTER GUIDE

Model	Age	Height	Size	Range	Level
3000	6+	ab 110 cm	S	Base	Beginner
4000		ab 110 cm	M	Base	
Base S		ab 110 cm	S	Base	
Wave Track S		ab 110 cm	S	Speciality	
Wave Track M	8+	ab 130 cm	M	Speciality	Beginner & Advanced
Jumpstart	6+	ab 110 cm	S / M	Base	
Base	8+	ab 130 cm	M	Base	
Rocky		ab 130 cm	M	Base	
5000		ab 130 cm	L	Base	
Reaper		ab 130 cm	M	Park	Advanced
Critter	12+	ab 150 cm	M	Park	
Ventus	8+	ab 130 cm	M	Park	Advanced & Pros
Trooper	15+	ab 170 cm	L	Speciality	
Reaper Venom	12+	ab 150 cm	M / L	Street/Park	Advanced
Zero V2		ab 150 cm	M	Street/Park	Pros
Beast V2		ab 150 cm	M	Park	







CHILLI

CHILLI

BASE



CATEGORY

# BASE

3000 - Red/Black  
110-4



3000 - Green/Black  
110-5



3000 - Blue/Black  
110-6



3000 - Black/Pink  
110-10



3000 - Black/Gold  
110-9




18



# CHILLI 3000 | THE ENTRY-LEVEL MODEL FOR THE YOUNGEST



-  **48 × 48 cm**
-  **100 mm**
-  **11.5 × 45 cm**
-  **3.1 kg**

## LEVEL RANGE

- |                                                                                                 |                                                                                               |                                                                                                   |
|-------------------------------------------------------------------------------------------------|-----------------------------------------------------------------------------------------------|---------------------------------------------------------------------------------------------------|
| <br>Beginner | <br>Base   | <br>Park       |
| <br>Advanced | <br>Street | <br>Speciality |
| <br>Pro     | <br>CSG   |                                                                                                   |

CATEGORY

# BASE



20

# CHILLI 4000 | THE ENTRY LEVEL STUNT SCOOTER FOR BUDDING PROS



-  **53 × 50 cm**
-  **110 mm**
-  **11.5 × 50 cm**
-  **3.4 kg**

## LEVEL RANGE

- |                                                                                                 |                                                                                               |                                                                                                   |
|-------------------------------------------------------------------------------------------------|-----------------------------------------------------------------------------------------------|---------------------------------------------------------------------------------------------------|
| <br>Beginner | <br>Base   | <br>Park       |
| <br>Advanced | <br>Street | <br>Speciality |
| <br>Pro     | <br>CSG   |                                                                                                   |

CATEGORY

# BASE





# CHILLI 5000 | THE PERFECT MODEL FOR YOUNG RIDERS WITH HIGH AMBITIONS



**60 × 50 cm**



**110 mm**



**11.5 × 50 cm**



**3.6 kg**

## LEVEL RANGE



Beginner



Base



Park



Advanced



Street



Speciality



Pro



CSG

CATEGORY

# BASE



24

# CHILLI BASE S | THE PERFECT BEGINNER STUNT SCOOTER FOR THE LITTLE ONES



 **56 × 55 cm**

 **110 mm**

 **11.5 × 47 cm**

 **3.55 kg**

## LEVEL RANGE

- |                                                                                                 |                                                                                               |                                                                                                   |
|-------------------------------------------------------------------------------------------------|-----------------------------------------------------------------------------------------------|---------------------------------------------------------------------------------------------------|
| <br>Beginner | <br>Base   | <br>Park       |
| <br>Advanced | <br>Street | <br>Speciality |
| <br>Pro     | <br>CSG   |                                                                                                   |

CATEGORY

# BASE



Base - Black/White  
118-1



Base - Black/Blue  
118-3



Base - Black/Orange  
118-2



Base - Black/Green  
118-4



Base - Black/Pink  
118-5

26



# CHILLI BASE | THE PERFECT ENTRY-LEVEL SCOOTER



 **58 × 56 cm**

 **110 mm**

 **11.5 × 50 cm**

 **3.65 kg**

---

## LEVEL RANGE

  
Beginner

  
Base

  
Park

  
Advanced

  
Street

  
Speciality

  
Pro

  
CSG

CATEGORY

# BASE



28

# CHILLI ROCKY | THE ENTRY LEVEL SCOOTER WITH A UNIQUE LOOK



 **58 × 56 cm**

 **110 mm**

 **11.5 × 50 cm**

 **3.65 kg**

## LEVEL RANGE



Beginner



Base



Park



Advanced



Street



Speciality



Pro



CSG

CATEGORY

# BASE

Chilli Pro Scooter Rocky Vol. 3 - Blue neochrome  
118-21



Rocky Vol. 2 - Black neochrome  
118-20



30



# CHILLI ROCKY VOL 2-3

THE ENTRY-LEVEL STUNT SCOOTER FOR NEOCHROME GEEKS



58 × 56 cm



110 mm



11.5 × 50 cm



3.65 kg

## LEVEL

## RANGE



Beginner



Base



Park



Advanced



Street



Speciality



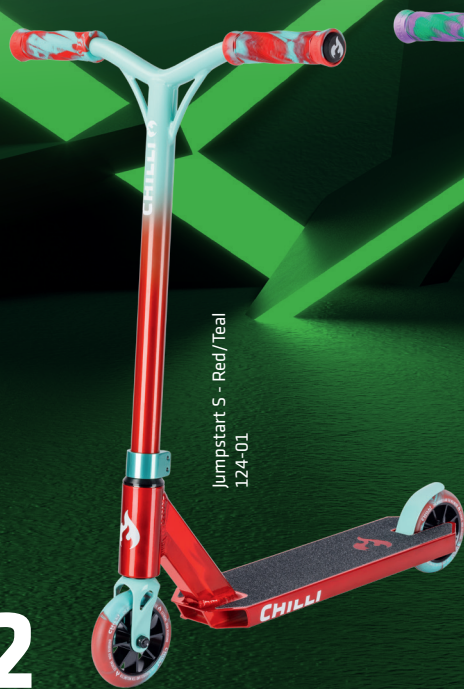
Pro



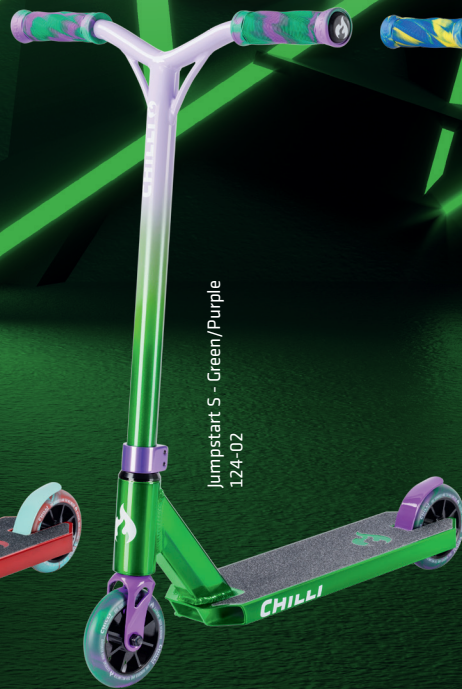
CSG

CATEGORY

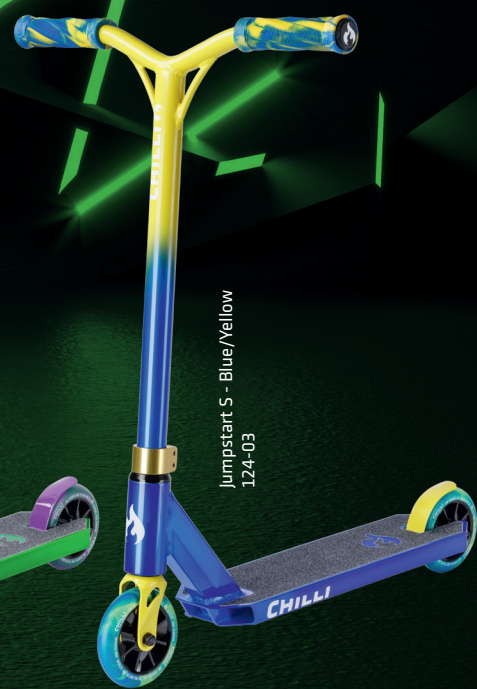
# BASE



Jumpstart S - Red/Teal  
124-01



Jumpstart S - Green/Purple  
124-02



Jumpstart S - Blue/Yellow  
124-03

32

# JUMPSTART S | EYE-CATCHING DESIGN IN BRIGHT COMPLEMENTARY COLORS



**48 x 48 cm**



**110 mm**



**11.5 x 45 cm**



**3.23 kg**

## LEVEL

## RANGE



Beginner



Base



Park



Advanced



Street



Speciality



Pro

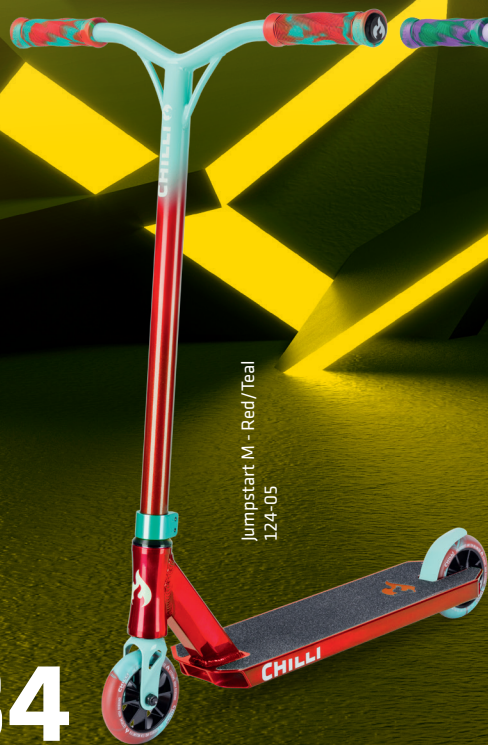


CSG

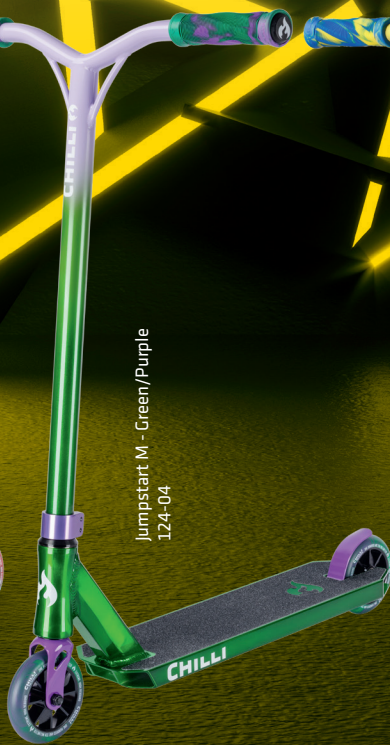


CATEGORY

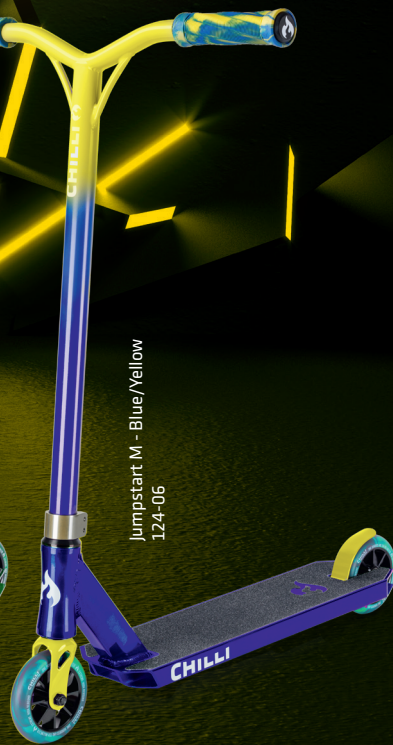
# BASE



Jumpstart M - Red/Teal  
124-05



Jumpstart M - Green/Purple  
124-04



Jumpstart M - Blue/Yellow  
124-06

34

# JUMPSTART M | EYE-CATCHING DESIGN IN BRIGHT COMPLEMENTARY COLORS



 **58 x 56 cm**

 **110 mm**

 **12.5 x 51cm**

 **3.58 kg**

## LEVEL RANGE



Beginner



Base



Park



Advanced



Street



Speciality



Pro



CSG







LL  
THED 2010

PARK

CATEGORY

# PARK

Reaper - Grim Neochrome  
112-9



Reaper - Grim  
112-1



Reaper - Gold  
112-13



Reaper - Wave  
112-5



# CHILLI REAPER | THE MOST POPULAR SCOOTER WITH OUR CHILLI RIDER TEAM



**58 × 58 cm**



**110 mm**



**11.5 × 50 cm**



**3.8 kg**

## LEVEL

## RANGE



Beginner



Base



Park



Advanced



Street



Speciality



Pro



CSG



CATEGORY

# PARK



Critter - Hercules Beetle  
113-01



Critter - Chameleon  
113-02



Critter - Octopus  
113-03

40

# CHILLI CRITTER

BREAKING BOUNDARIES  
WITH UNIQUE ABILITIES



**64 x 58 cm**



**110 mm**



**11.5 x 50 cm**



**3.8 kg**

## LEVEL RANGE



Beginner



Base



Park



Advanced



Street



Speciality



Pro



CSG

CATEGORY

PARK

Beast V2 - Black/Neochrome  
119-01



42



# CHILLI BEAST V2 | A PIECE OF ART IN THE HIGH-END RANGE OF CHILLI PRO SCOOTER



 **61 × 58 cm**

 **110 mm**

 **11.5 × 50 cm**

 **3.5 kg**

## LEVEL RANGE



Beginner



Base



Park



Advanced



Street



Speciality



Pro



CSG

CATEGORY

# PARK



Chilli Pro Scooter Ventus M - Black/White  
122-01

# 44

# CHILLI VENTUS M | MAXIMUM AIRTIME OPTIMIZATION



**58 × 56 cm**



**110 mm**



**11.5 × 48 cm**



**2.95 kg**

## LEVEL RANGE



Beginner



Base



Park



Advanced



Street



Speciality



Pro



CSG



CATEGORY

# PARK

Chilli Pro Scooter Ventus L - White/Black  
122-02



46

# CHILLI VENTUS L | MAXIMUM AIRTIME OPTIMIZATION



**67 x 56 cm**



**110 mm**



**11.5 x 50 cm**



**3.1 kg**

## LEVEL RANGE



Beginner



Base



Park



Advanced



Street



Speciality



Pro



CSG





WICKED  
WOODS

STREET

CATEGORY

# STREET



ZERO V2 - Polished  
114-6

# 50

# CHILLI ZERO V2 | THE NEXT GENERATION PRO ALUMINIUM SCOOTER



**61 × 58 cm**



**120 mm**



**12.5 × 52 cm**



**3.6 kg**

## LEVEL

## RANGE



Beginner



Base



Park



Advanced



Street



Speciality



Pro



CSG



CATEGORY

# STREET



Venom M - Green  
125-01



Venom M - Purple  
125-02



Venom M - Red  
125-03

52

# REAPER VENOM M | THE PERFECT SCOOTER FOR HYBRID RIDERS



 **60 × 58 cm**

 **110 mm**

 **12.5 × 51 cm**

 **3.25 kg**

---

## LEVEL RANGE

 Beginner	 Base	 Park
 Advanced	 Street	 Speciality
 Pro	 CSG	

CATEGORY

# STREET



Venom L - Green  
125-04



Venom L - Purple  
125-05



Venom L - Red  
125-06

54

# REAPER VENOM L | THE PERFECT SCOOTER FOR HYBRID RIDERS



Innovative Morphing Handlegrips – twist it to fit your perfect grip

Super-lightweight aluminum T-bar reinforced by a heat treatment

Devils wings technology for less weight with a 12.5 cm wide Deck

110 mm Wheels with ABEC 9 Bearings for extra Speed



65 × 58 cm



110 mm



12.5 × 52 cm



3.6 kg

---

## LEVEL RANGE



Beginner



Base



Park



Advanced



Street



Speciality



Pro



CSG





SP



ECIALITY



CATEGORY

# SPECIALITY

Wave Track - S - Dark Grey/Blue  
150-01



58



# WAVE TRACK S

THE FIRST EVER  
PUMPTRACK SCOOTER



 **42 x 50 cm**

 **150 mm**

 **13 x 43 cm**

 **4.13 kg**

---

## LEVEL RANGE



Beginner



Base



Park



Advanced



Street



Speciality



Pro



CSG



CATEGORY

# SPECIALITY

Wave Track - M - Dark Grey/Red  
150-02



60

# WAVE TRACK M | THE FIRST EVER PUMPTRACK SCOOTER



 **58 x 58 cm**

 **150 mm**

 **13 x 48 cm**

 **4.47 kg**

---

## LEVEL RANGE

		
Beginner	Base	Park
		
Advanced	Street	Speciality
		
Pro	CSG	

CATEGORY

# SPECIALITY



Chillii Pro Scooter Trooper - Green Matt / Black  
145-01

62

# CHILLI TROOPER | ALL IN ONE - STUNT AND CITY SCOOTER



**63 x 58 cm**



**145 mm**



**12.5 x 53 cm**



**4.35 kg**

## LEVEL

## RANGE



Beginner



Base



Park



Advanced



Street



Speciality



Pro



CSG











CATEGORY

CSG



66



**CSG** | 100%  
RIDER OWNED

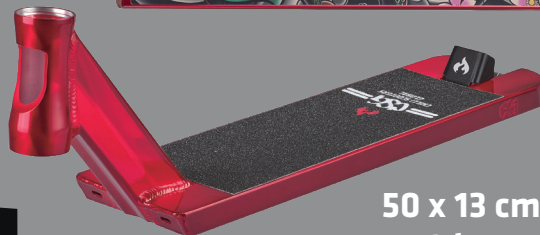


56 x 15 cm  
1.7 kg

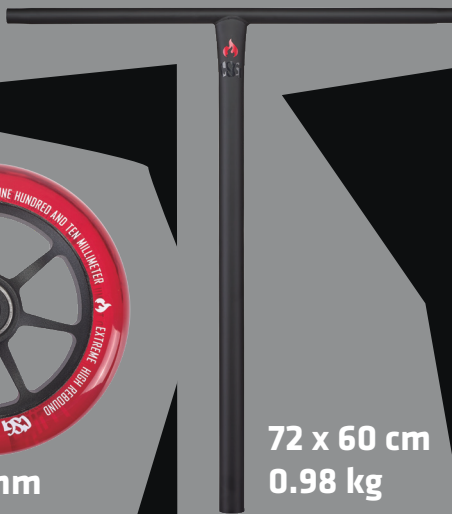
**CSG**



110 mm



50 x 13 cm  
1.48 kg



72 x 60 cm  
0.98 kg

**LEVEL**

**RANGE**



Beginner



Base



Park



Advanced



Street



Speciality



Pro



CSG

# MERCH



## HOODIE



CCH0001 - Chilli Hoodie Classic - S - Black  
CCH0002 - Chilli Hoodie Classic - M - Black  
CCH0003 - Chilli Hoodie Classic - L - Black  
CCH0004 - Chilli Hoodie Classic - XL - Black

## LONGSLEEVE



CCL0001 - Chilli Hoodie Classic - S - Black  
CCL0002 - Chilli Hoodie Classic - M - Black  
CCL0003 - Chilli Hoodie Classic - L - Black  
CCL0004 - Chilli Hoodie Classic - XL - Black

## T-SHIRT WHITE



CCT0001 - Chilli T-Shirt Classic - S - White  
CCT0002 - Chilli T-Shirt Classic - M - White  
CCT0003 - Chilli T-Shirt Classic - L - White  
CCT0004 - Chilli T-Shirt Classic - XL - White

## T-SHIRT BLACK



CCT0005 - Chilli T-Shirt Classic - S - Black  
CCT0006 - Chilli T-Shirt Classic - M - Black  
CCT0007 - Chilli T-Shirt Classic - L - Black  
CCT0008 - Chilli T-Shirt Classic - XL - Black





# CHILLI PRO PARTS

## WHEELS



3000 Series  
100 mm  
CEW0032



Base (S) and Rocky Series  
110 mm transparent  
CEW0039



Critter Series  
110 mm  
CEW0053



Jumpstart Series  
110mm  
CEW0062



Reaper Series  
110 mm  
CEW0022



Turbo and Beast Series  
110 mm  
C-1034-BB



Wave Track Series  
150mm  
CEW0059



Hollow Core Series  
120 mm  
CEW0006

## GRIPS



Handle Grips  
3000 to 5000 Series  
CSH9008



Handle Grips  
XL  
505-12



Morphing Handle Grips  
3.0 - 140 mm  
CSH9035

## T-BAR



3000 to 5000 Series  
CrMo  
CET0003



Jumpstart Series -  
Steel 5856cm  
CET0055



Pro Series  
Aluminium oversized  
CET0002

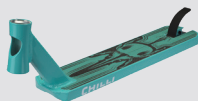


Y-Bar Wave Track Series -  
Steel 5858 cm  
CET0043



Reaper Venom Series -  
Aluminium 6558cm  
CET0048

## DECKS



Critter  
CED0052



Jumpstart  
CED0068



Wave Track  
CED0061



Reaper Venom  
CED0065



Archie Cole Griptape  
CEG0034



Critter Griptape  
CEG0025

## GRIPTAPE

## PEGS



Peg Barrel  
C-1033-GO



Peg Barrel  
C-1033-S

## BRAKES



100 mm Flex Brake  
C-1042-B



Flex Brake 2.0 - 110 mm  
CEB0010



120 mm Flex Brake  
C-1044-B

## HEADSETS



3000 to 5000 Series  
CEH0002

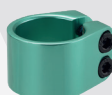


Reaper Series  
C-1037-RB

## CLAMPS



3000 to 5000 Series -  
2-Bolt Spider HIC  
CEC0033



Jumpstart -  
2-Bolt HIC  
CEC0049



Wave Track Series -  
3-Bolt HIC  
CEC0047



Archie Cole Series  
Spider HIC oversized  
CEC0007



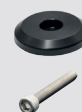
Street Series  
SCS  
CEC0040



Spider HIC  
C-1035-B



HIC  
CS00016



SCS  
CS00034



Spider HIC 2.0  
CS00060

## FORKS



3000 to 5000 Series  
Spider HIC  
CEF0004



Base (S) and Rocky Series  
HIC  
CEF0001



Reaper Series  
Spider HIC  
CEF0010



Ventus  
HIC 160mm  
CEF0033



Crittter Series  
Spider HIC  
CEF0030

All products are available in other colours



www.chilli-proscooter.com

71



@ChilliProScooters



@chilliscootersglobal



@chilliproscooter



www.chilli-proscooter.com

**CHILLI** 